

**RISE** | Retrofit information,  
support & expertise

# RISE; Supporting Rural Retrofit

September, 2024

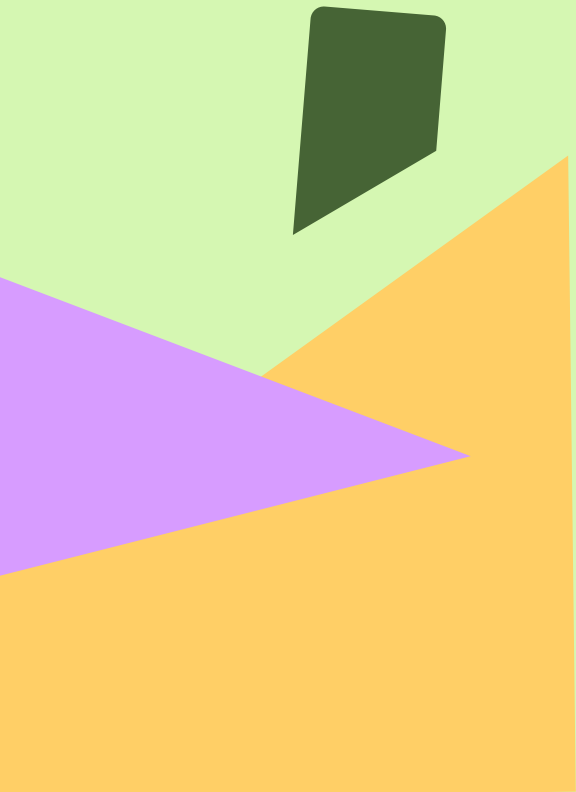
Gareth Field, Senior Sustainability Consultant, Turner and Townsend

Funded by



Delivered by



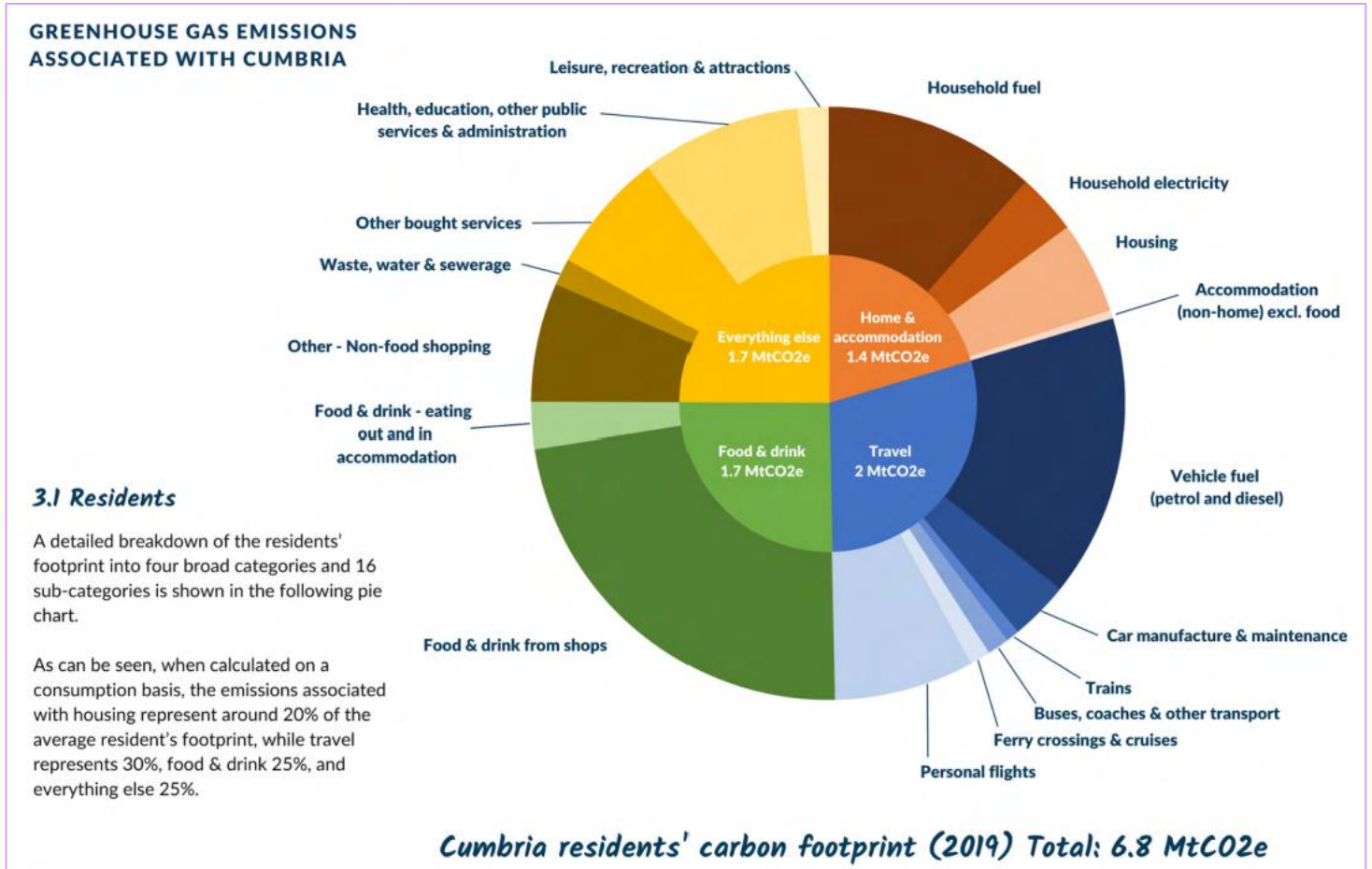


# Carbon footprint of rural communities

# Greenhouse gas emissions associated with Cumbria

## Summary of Greenhouse gas emissions in Cumbria, Zero Carbon Cumbria partnership

1 MtCO<sub>2</sub>e = 1,000,000t



Source: Small World Consulting

# Housing in rural communities

**46%** of low income families in homes at EPC D-

Avg. **15.5%** of homes fuel poor

Median fuel costs in rural areas **£2790**

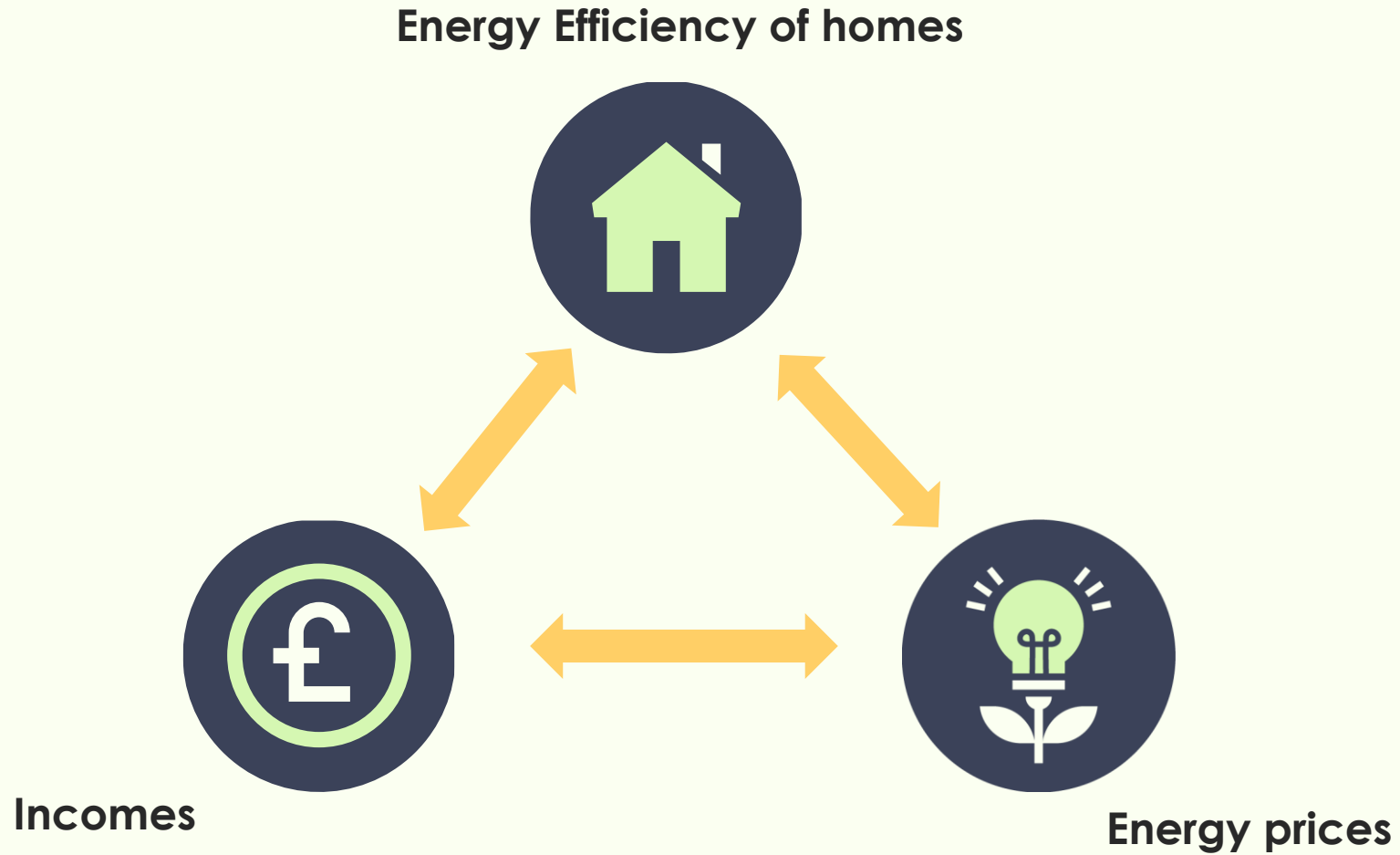
Rural workers with lowest incomes

**20%** of off Gas grid homes in fuel poverty

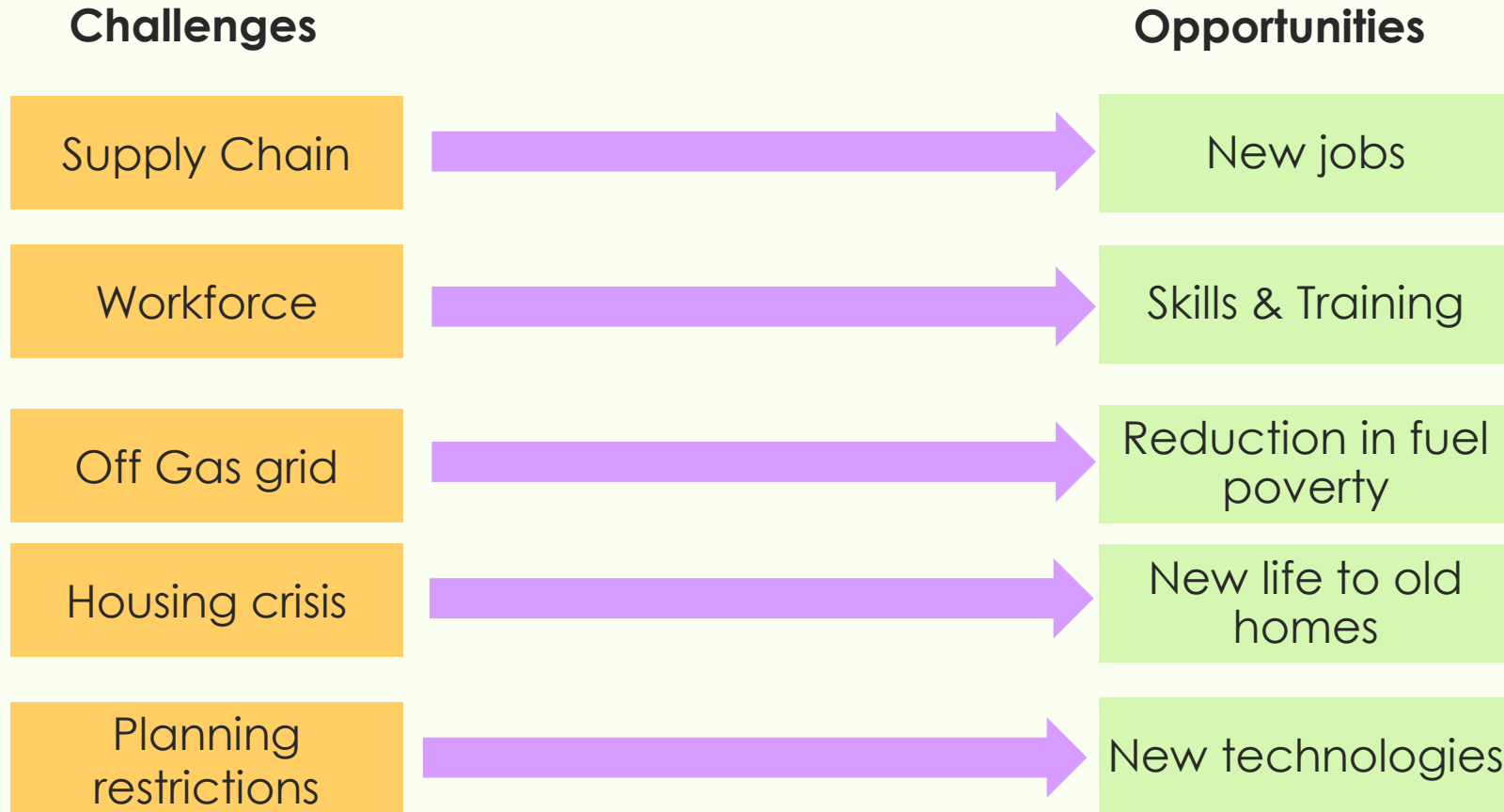
Rural homes Avg energy efficiency **score of 60**

Larger homes Avg. 34m<sup>2</sup> bigger

# What can be done



# Retrofit of residential homes



# Cornwall Council

“social houses, particularly here in Cornwall, and they’re in the middle of nowhere... what we’re doing with these houses, we are **adding a life expectancy beyond my lifetime even**”

“I think and if we want to talk about being green and **reducing carbon emissions** and even helping the planet for our kids, then, in our small little way I can see the **benefits of the work we are doing here.**”

*- Paul Beauchaine, 58, is a Senior Contracts Manager*

[Read more here](#)

Cornwall Council awarded **£1 million** to retrofit an estimated 75 homes, creating decarbonised neighbourhoods. It is expected to support **42 local jobs**.

It will install

- external wall insulation
- replace oil and gas heating new air-source heat pumps
- solar panels,

Improve energy efficiency, reduce the carbon footprint and keep residents warm through the winter months.

**RISE** supported with advice pre application and critical friend reviews



# RISE support

# How have we helped before?

Our **free service** has supported social housing providers and local authorities to successfully secure funding for SHDF and HUG 2.

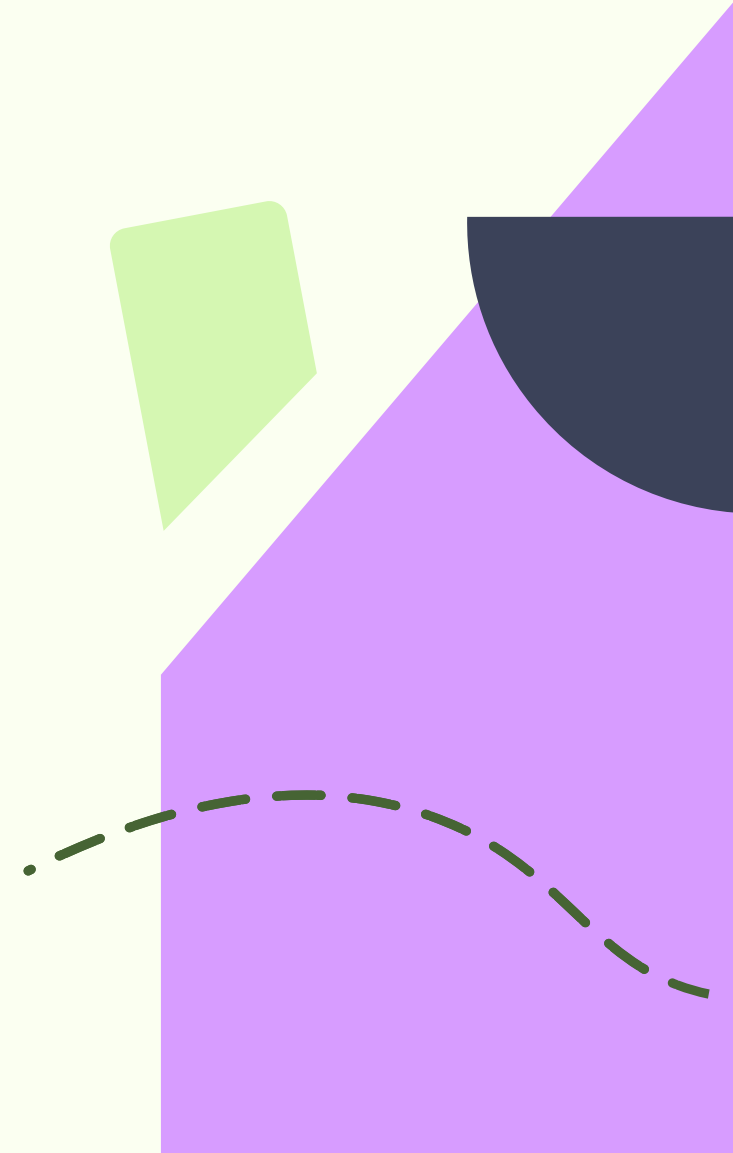
Through RISE we are now offering support to the **supply chain too**.

**97.7%** of the successful bidders in Wave 2.1 were supported via SHRA

We increased the funding pipeline from **£645m** to **£887m** for SHDF Wave 2.1

**308** organisations were represented through the **131** successful SHDF bids

**89%** of HUG 2 applications received our support, which accounted for **94%** of the total funding requests



# Our support: Technical



**Self-assessment** to understand the level of support prospective applicants require.



A **diagnostic** call to assess how ready your organisation is to apply for funding.



A **support plan** defining one-to-one support that your organisation will receive to prepare your Wave 3 application.



**One-to-one support** provides in-depth advice and support (e.g., archetype matching service).



Tailored **consortium support**.



**Critical friend review** offering an independent review of your application before submission.

# Our support: Learning & Development



**Masterclasses** offering learning on specific topics connected to funding applications or technical insights.



**Courses** delivered online and in-person to build your retrofit knowledge.



**Peer-to-peer** presentations bring in professionals to share their retrofit journey, best practice and knowledge.



**Roundtables** to discuss common issues in a small group setting.



**Drop-in clinics** offer a guided group discussion space to answer your queries.

# Our support: Learning & Development



A range of **toolkits** with topic specific guidance available on our Knowledge Hub.



**Podcasts** to provide bitesize and digestible knowledge and information.

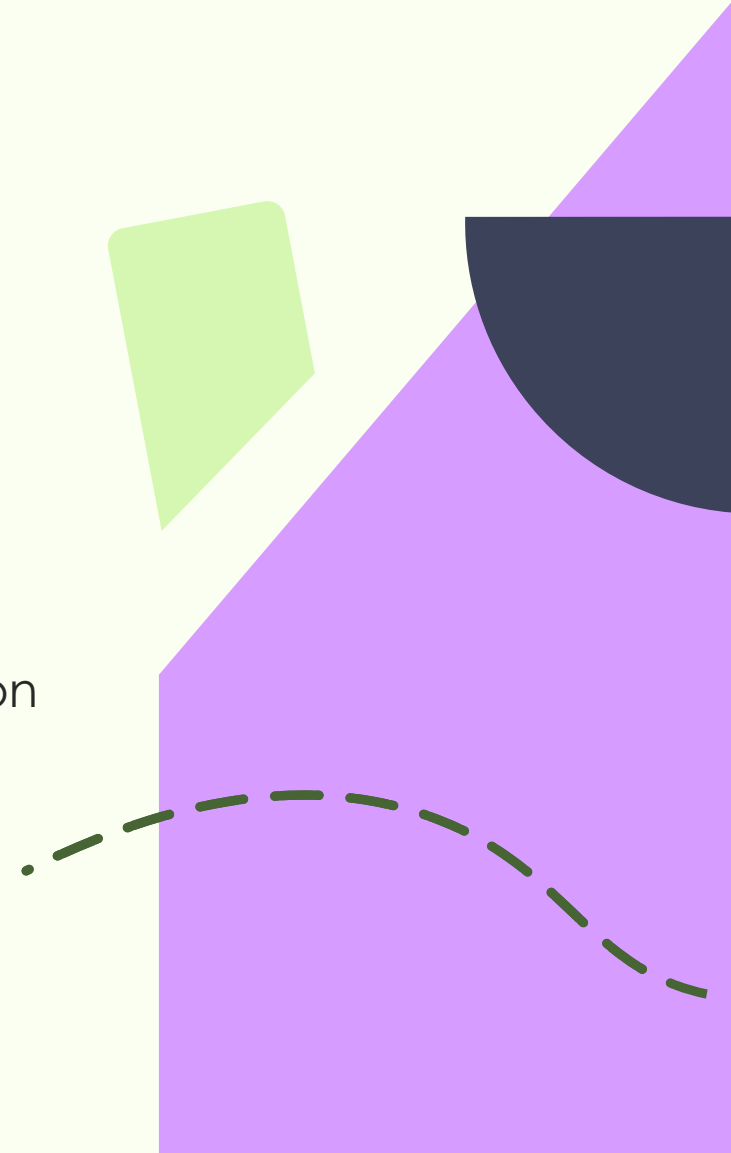


Weekly **newsletters** to keep you up to date on the latest news and events.

# Support

- Creation of consortium bids – Small providers coming together to be more than the sum of their parts
- Complex to De-carbonise – Learning for dealing with complex homes, heritage building and homes in Conservation and National park areas
- Masterclasses – Delivering training for staff to understand all aspects of retrofit
- Knowledge hub – Information on different aspects of Retrofit
- Bespoke support – Critical friend supporting from concept to application
- Case studies – Learning from others in similar situations

Self-Assessment | Retrofit Information, Support and Expertise  
(riseretrofit.org.uk)



Thank you. Questions?

Speaker's email: [gareth.field@turntown.co.uk](mailto:gareth.field@turntown.co.uk)

Rise email: [rise@turntown.co.uk](mailto:rise@turntown.co.uk)

Rise website: <https://riseretrofit.org.uk/>

**RISE** | Retrofit information,  
support & expertise

Funded by



Delivered by

