

Sustainable Tadcaster Climathon

Community action towards climate resilience in Tadcaster

17 September 2025

Climate action in Tadcaster

Flooding and the bridge collapse Dec 2015 became the instigator of community action and cohesion



Tadcrafters CIC

- Tadcrafters – using skills and resources locally for the benefit of the community- repurposing craft materials and reducing waste e.g. fabric, yarn, wood
- Circular towns initiative- NYLEP = Sustainable Tadcaster
- NYC funding to encourage business into the local economy = Totally Locally Tadcaster



Tadcrafters' collaborations with universities

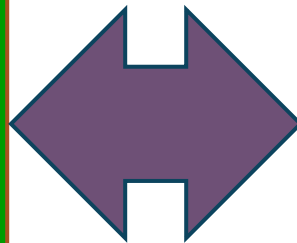
- Community Research Grant from YSJU Institute for Social Justice: Mapping of sustainable initiatives, Yorkshire Film Archive show and craftivism activities
- Continued work with YSJU and linking up with Circular Malton and Norton CIC
- Climathon event with NICRE - increased awareness across major stakeholders of the specific issues faced in Tadcaster



National Innovation Centre for Rural Enterprise: What we do

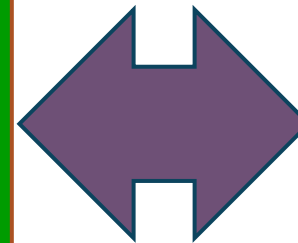
We research

to increase our knowledge, change the way we think about rural enterprises, how we address their challenges and identify new opportunities



We innovate

with our partners, to encourage new ways of thinking and supporting innovations that provide tangible benefits to rural businesses and communities

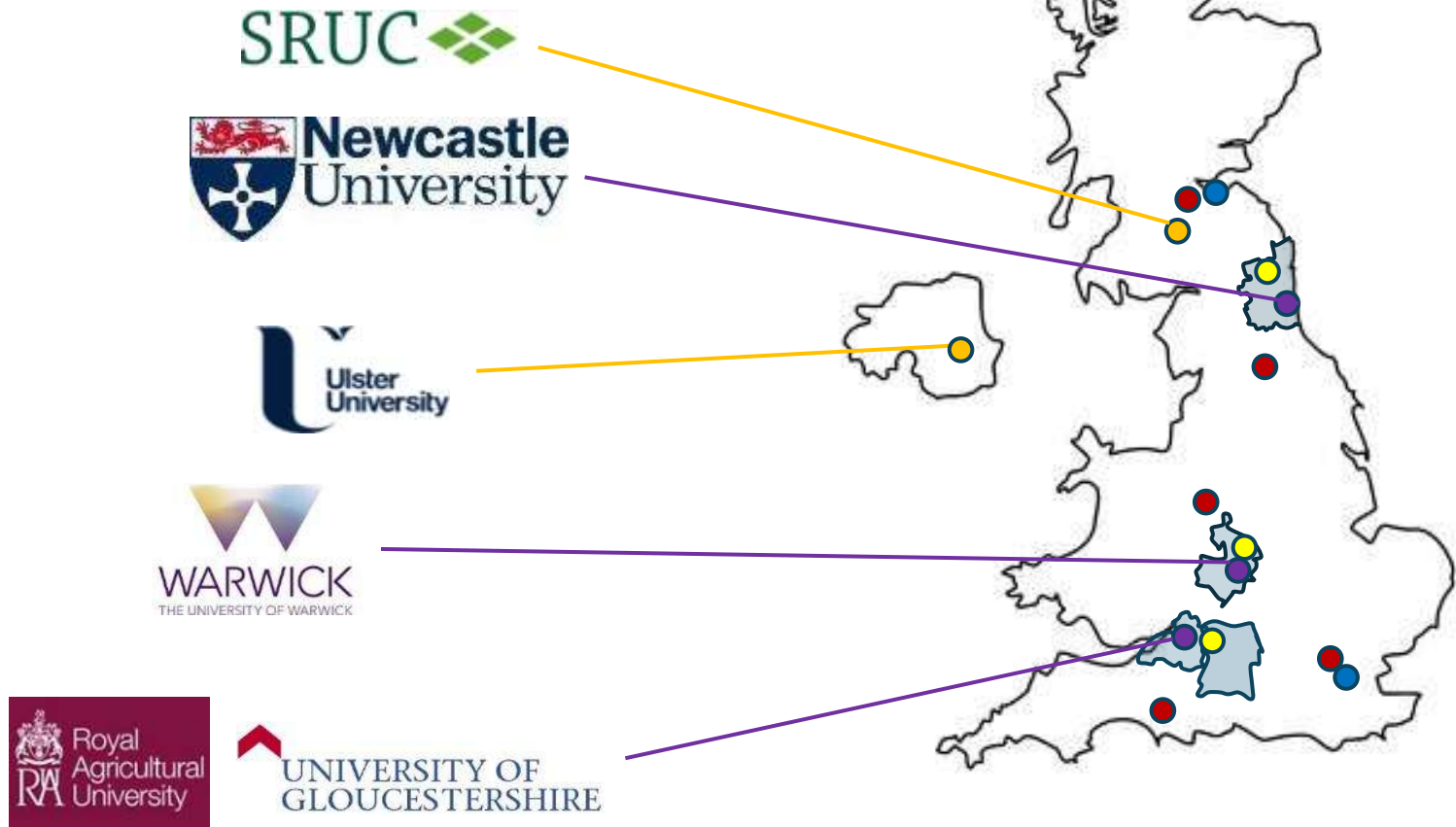


We inform

by sharing knowledge, best practice and practical experience to inform local, regional and national policy and support for rural enterprise

National Innovation Centre for Rural Enterprise: How we work

- NICRE founding HEI partners
- NI & Scottish partners



Regional and local engagement:
e.g. Local, combined and mayoral authorities, LEPs, National Parks and AONBs, community groups, business and sector networks, third sector organisations, community enterprise, etc.

National business collaboration:
e.g. Strutt & Parker (founding business partner), Federation of Small Businesses, Country Land & Business Association, Plunkett Foundation, Commsworld etc.

Policy collaboration:
e.g. DEFRA, BDUK, Scottish Gov't, Rural Services Network, Rural England, Action with Communities in Rural England, Innovate UK, OECD etc.

What is a Climathon?



Short, intense period



Variety of
stakeholders



Place-based



Ideas pitched to a
panel of judges

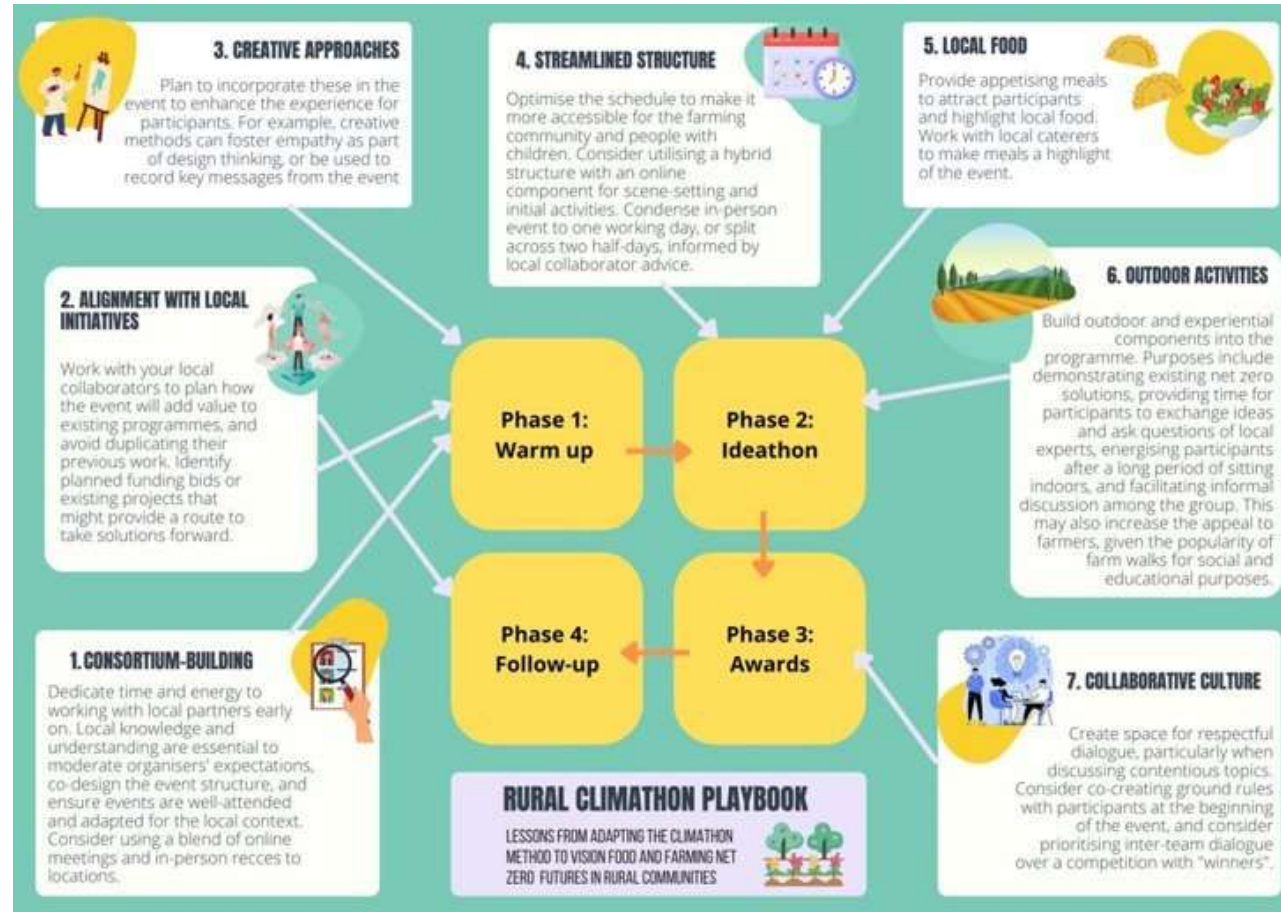
Rural Climathon adaptations

Climathons have mainly taken place in cities and were adapted for rural areas by NICRE partners

- 2-part event - webinar and then one day in-person event
- Site visit and a walk, which helps inspire team deliberation and solution development
- Focus on collaboration over competition



Rural Climathon Playbook



Climathons are a great way to...

- Bring stakeholders together to define challenges and develop solutions
- Create spaces to co-produce non-governmental climate-related strategy
- Involve policymakers

Keep an eye out for a new Climathon toolkit coming soon to the NICRE website



Tadcaster – the Climathon challenge



How might local businesses, community groups and organisations work together to make Tadcaster more economically, ecologically and socially resilient to the impacts of climate change?



TADCRAFTERS



"How might local businesses, community groups and organisations work together to make Tadcaster more economically, ecologically and socially resilient to the impacts of climate change?"



HOW MIGHT WE...?

REVITALISE TADCASTER HIGH STREET

COMMUNITY POOL HAS 4-5000 VISITORS A WEEK

DIS-LOYALTY CARD

- USE LOCAL
- SHARE EXPERIENCES
- ENJOY A BENEFIT

USE LOCAL BE REWARDED:

- FREE SWIM
- COFFEE
- CLASS

POP UPS AND A HUB

DIGITAL HIGH STREET

SUCCESS

VIBRANT POSSIBILITIES

CHANGE THE NARRATIVE OF TADCASTER

PRIDE

LOCAL BUSINESS CONSORTIUM

ENGAGE, EDUCATE AND INSPIRE VIA A DEMO/COMMUNITY HUB

RETROFIT

EDUCATE

INSPIRE

CELEBRATE PLACE

POP UPS AND A HUB

SUSTAINABILITY MODEL

START IN EXISTING BUILDINGS

SUSTAINABILITY KNOWLEDGE SHARE

BOSTON SPA

TADCASTER ARTS AND SOCIAL HUB

ATTRACT TO TADCASTER

SELBY

USE ROOFTOPS FOR COMMUNITY ENERGY

ENGAGE WITH ...LOCAL BUSINESSES?

... LOCAL HOUSING

SCHOOL

... COUNCIL BUILDINGS

SCALE UP

DON'T REINVENT THE WHEEL

START SMALL

COMMUNITY ENERGY CO-OPERATIVE

REDUCE CARBON EMISSIONS

BOOST RESILIENCE

STORE EXCESS ENERGY

CREATE A BROKERAGE SYSTEM TO REPURPOSE WASTE

ONE PERSON'S WASTE IS ANOTHER'S TREASURE

WEEKLY COLLECTION £1200

AD-HOC £70 PCA COLLECTION

GATHER DATA OVER 6 MONTHS TO SUPPORT PLAN B:

NATURE BASED SOLUTIONS

MAP WASTE - ACT NOW

ENGAGE BUSINESSES

TALK TO PARTNERS

TADCASTER NEWS

WASTE NOT WANT NOT WHO'S IN:

RECYCLE SHED

SWAP

PITCH FOR SMALL GRANTS

USE THE RIVER TO CREATE HYDRO POWER

TADCASTER WEIR

LINK POWER

G59 TO GRID

ARCHIMEDEAN SCREEN TRIED AND TESTED

365 DAYS OF POWER

1. FEASIBILITY STUDY
2. EMPLOY ENGINEER
3. DRAGON MODELS
4. DECISION POINTS
5. ACTION

WORK WITH GREAT BRITISH ENERGY

FOR SALE WHO OWNS THE RIVER?

VISIT

EXISTING HYDRO

PROVIDE ON-DEMAND, SUSTAINABLE TRANSPORT OPTIONS

OUTLYING VILLAGES

DIAL A RIDE

ENCOURAGE SUSTAINABLE TRAVEL

TIMETABLES INFO + BOOKING

FREE UP PARKING

COASTLINER LINKS NEXT BUS

LINK UP TO BUS ROUTES

MAKE PUBLIC TRANSPORT ACCESSIBLE TO ALL

Illustration: Amanda Steer

Looking ahead – future of climate action in Tadcaster

- Further funding for Totally Local Tadcaster – increase in capacity with appointment of Town Centre Delivery Manager
- Completion of feasibility study on Tadcaster Arts and Community Centre, ready for next stage – economic and ecological sustainability at the core of ethos for influence in community
- Awareness of climate issues still needs to reach the reluctant majority
- New flood alleviation scheme- still waiting for spades in the ground nearly 10 years on





NICRE

National Innovation Centre Rural Enterprise

Su Morgan, Director of Tadcrafters CIC

tadcrafters@outlook.com

Dr Natalie Partridge, Researcher at NICRE

Natalie.Partridge@newcastle.ac.uk

www.nicre.co.uk

Founding research partners:



Funded in partnership with:

